

TECHNICAL DATA SHEET

Sherwin WTP-1 Wash Test Panel

Penetrant Testing

DESCRIPTION

The Sherwin Wash Test Panel is used to determine the intrinsic level of background fluorescence in a penetrant system.

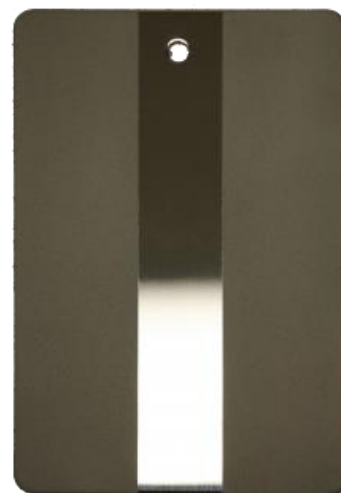
SPECIFICATIONS

Stainless-steel panel measuring 4 x 6 inches and 0.090 inch thick with two parallel, "medium rough" strips, each 6 x 1 1/2 inches separated by a smooth 1-inch strip. The wash panel is used to meet monthly removability testing required by MIL-STD-6866 and ASTM E-1417.

CLEANING DIRECTIONS

It is important to clean the Wash Test Panel after each use. A suggested procedure follows:

1. Lightly scrub the panel with a soft cloth or towel saturated with a mild detergent solution. Avoid scratching the panel's surface. Rinse the panel thoroughly with a water spray. This removes the developer and some penetrant.
2. Dry the panel thoroughly. The panel may be air dried, or a heat blower or oven may be used to accelerate drying.
3. To remove remaining penetrant traces, immerse the panel in acetone, isopropyl alcohol, 1,1,1-trichloroethane, or similar volatile solvent for a few minutes with some agitation. Replace the solvent frequently.
4. (optional) clean the panel in an ultrasonic cleaner charged with a safe chlorinated solvent for two minutes.
5. Dry the panel thoroughly, refer to step 2.



ORDERING INFORMATION

Product Code	Packaging
WTP-1	Sherwin WTP-1 Wash Test Panel

WARRANTY – All statements, information and data presented herein are believed to be accurate and reliable but are not to be taken as a guarantee, expressed or implied, for which seller assumes legal responsibility and they are offered solely for your consideration, investigation and verification. Statements or suggestions concerning possible use of this product are made without representation or warranty that any such use is free of patent infringement and are not recommendations to infringe on any patent.

Created 17th September 2021 Date Printed 15/10/2021 2:37 PM